

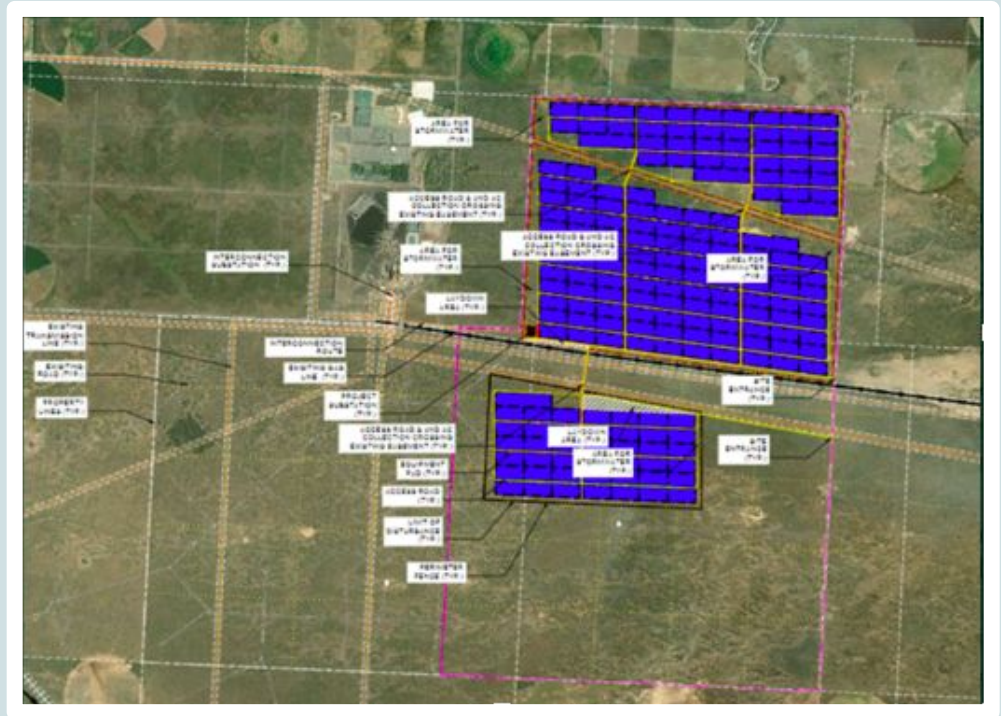
## Case Study

**Repowered a new solar energy resource to replace a retiring coal plant. \$500M infrastructure project** creating \$105M in direct and indirect local economic impact over 15-years. \$20M in tax revenue directly benefiting hospitals, schools and counties.

### Solar Collective:

- **Raised the project's point of interconnection to the electric grid to maximize value**
- **Started relationships** with all landowners and broker to ensure plan stays on track for the years-long development and group negotiations
- **Procured waivers** from dozens of sub-surface mineral owners
- Performed in-depth power flow, transmission analysis
- **Performed environmental analysis to determine the optimal placement for the solar footprint** within the available land, so as to not disturb any potential wetlands/wildlife/water wells/oil wells
- Sold the project to one of the largest developers in the world

## Power Plant Development, Texas 700MW



Explore more at [SolarCollective.energy](https://SolarCollective.energy)